

PHIXEL IHW (8 TO 32MM WIDTH) Image handler auto width

Application

- Inspection after taping to detect orientation, lead, mark, seal, package surface defect, reel label and quantity

Key Feature

- Min. 5MP camera for top & bottom inspection
- AOI cellular network architecture for recipe management
- Support 7-inch to 13-inch reel diameter
- Throughput: up to 120K UPH (subject to test)
- Option: Tilted lead defect vision
- Cu exposure detection (color camera as option)
- Support standard SMD, leadless, clip bond and WLCSP packages.
- Carrier tape width: 8 to 32mm (auto track width)
- Advanced Defect Classification (ADC) by deep learning
- SEMI standard with SECS/GEM interface
- Option: real-time data feeding to MES and eSPC
- Option: auto email alert (critical defect and batch summary)
- Anti-mixed reels detection



Post-seal In-Tape Inspection

Imaging System

Camera	5M pixels area camera monochrome
Number of camera	2 (top) +1 (bottom)
Resolution / Field of View	4-16 μ m/pixel FOV: 10mm to 40mm
Min object detection	16 μ m
Lighting	Red Ring + Coaxia + Back panel light

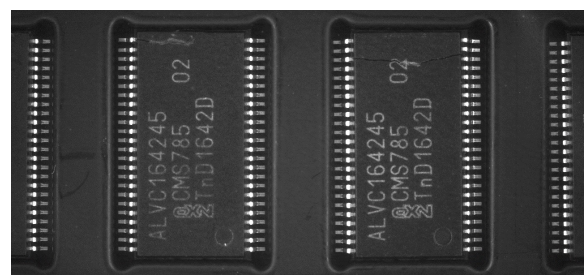


Image from camera

Inspection Categories

Program Mode:	Fast programming for common reject criteria			
Reject treatment:	Electronic map			
Inspection View:	Top (and angle camera for lead lift up defect as upgrade option)			
Inspection items:	Marking defects: <ul style="list-style-type: none"> - Un-clear mark (faded character) - Shift mark (misaligned marking) - Incomplete mark - Double mark (multiple character) - Vertical mark (wrong orientation) - No mark - Mixed marking 	Moulded Package defects: <ul style="list-style-type: none"> - Bubbles / Bulge - Voids/pinholes - Crack - Broken body - Chipping - Scratch - Unmoulded - Incomplete fill - Foreign material 	Lead Package defects: <ul style="list-style-type: none"> - Mould flash on/along lead - Foreign material & contamination - Exposed wire / clip - Ejector mark - Visible wire - Solder bridging - Bent lead / Lead angle - Lead sweep - Lead length - Lead spacing / span - Lead cuts/Depressions/ Damage - Lead burr - Missing lead - Lead length - Incomplete lead forming - Metal burr 	Taping defects: <ul style="list-style-type: none"> - Loose / unseal cover tape - Cover tape misalignment - Damaged / Contamination cover tape - Deformed / damaged cavity - Damaged bottom tape - Chipped / Broken body - Mixed product - Edge sealing - Unseal tape - Offset sealing - Cover tape tearing - Product tilting - Stand on edge - Up side down - Wrong orientation - Empty pocket - Tape remaining (adhesive stucked on cover tape) - Foreign material / plastic burr - Stick on cover tape - Leader and trailer - Tend space (cover tape concave upward after sealing) - Tape winding direction - Double devices in pocket - Tape leader / trailer length - Index hole deformed or broken - Consecutive empty pocket - Reel label information check